



STEP 1 – PRIOR TO INSTALLATION

- A) Husky®** only approves installing the flares according to these written instructions with the hardware provided. **WARNING:** Failure to install according to these instructions will invalidate the warranty. This includes, but is not limited to using alternative installation methods, hardware, or materials. **DO NOT USE:** Loctite, SuperGlue, or similar products on the hardware or the flares.
- B) Fit:** Verify the fit of the flares to vehicle. (Some filing, sanding, or cutting may be necessary to ensure proper fit).
- C) Painting:** (Optional) if paint is desired it must be done prior to installing flares on vehicle. Clean outer surface with a good grade degreaser. **DO NOT USE LACQUER THINNER OR ENAMEL REDUCER AS A DEGREASER.** Wipe outer surface thoroughly with a tack rag prior to paint. Application of plastic adhesion promoter for ABS plastic as per your paint system manufacturer's recommendations is required. Paint flares using a high quality enamel, or polyurethane automotive paint. If painting edge trim (not recommended), use a flex additive.
- D) Performance:** Using larger Tires may increase the area required to turn the vehicle. Some Tire/Rim combinations may require lowering bump stops and or installing steering stops to prevent tire from contacting flare.
- E) Exhaust System:** Modifications may be necessary to maintain a minimum 4" clearance between flares and exhaust pipes. (Exhaust gases should not vent directly onto flares)
- F) Metal Protection:** All exposed fasteners and bare metal should be treated with rust resistant paint **BEFORE** installing flares. Spray inner fender wells with undercoating **AFTER** flare attachments have been completed.
- G) Decals:** Flares may interfere with existing decals on vehicle. If you wish, remove decals prior to installation of flares.
- H) Care & Cleaning:** Husky fender flares are built to last; any detergent you use to wash your vehicle is sufficient to clean the flare. Do not use any harsh abrasive detergents.

GMC Sierra 2500 / 3500 Pocket Style® / Extend-A-Fender® Flares Set of 4 Set Part #2804987 #2804988

Rev-1 11/19/2020

TOOLS FOR EASY INSTALLATION:

- Utility Knife
- #2 Phillips Driver
- Socket Wrench
- 10mm Socket
- T15 Torx Bit
- Awl or Similar Pointed Tool
- Grease Pencil
- Pliers

PLEASE READ: Dirt and debris can become lodged between the fender flares and the vehicle's fenders, causing scratching and paint wear from vibration. Husky Liners is not responsible for any damage, and the installation of our fender flares is done with the buyer's understanding that this scratching and paint wear may occur.

LIMITED LIFETIME WARRANTY AGAINST ANY MANUFACTURING DEFECTS

- To claim a warranty, you must provide Proof of Purchase.



The material that your product is made from can be recycled. Please also consider recycling the packaging that your product came in.



Included in Hardware Kit:

- | | | | | | | |
|--|---|---|--|---|--|---|
| 1. 
SW1-0067,
5/16 x 18 x 3/8"
SS Torx Screw,
(Pocket Style Only)
30 pcs | 2. 
WA1-0012,
.320 x .700 x .03
SS Washer,
(Pocket Style Only)
30 pcs | 3. 
NU1-0019,
5/16-18 Jam Fin.
Nylock Nut,
(Pocket Style Only)
30 pcs | 4. 
SW1-0052,
T-45 Torx Bit,
(Pocket Style Only)
1 pc | 5. 
ET1-0002,
Edge Trim Tool,
1 pc | 6. 
GP1-0025
Edge Trim
360 inches | 7. 
RV1-P006,
8 x 20mm Black
Nylon Retainer,
26 pcs |
| 8. 
CL1-0022,
#10 "U" Clip,
8 pcs | 9. 
MB1-0003,
GDB Mounting
Bracket,
4 pcs | 10. 
WA1-0014,
#10 SAE SS Black
1/2" Flat Washer,
8 pcs | 11. 
SW1-0054,
8-32 x 1" Phillips
SS PH Screw,
4 pcs | 12. 
NU1-0004,
10-24 Nylock Nut,
4 pcs | 13. 
RV1-P008,
1/4" Panel
Retainer,
4 pcs | 14. 
SW1-0058,
#10 x 5/8" Phillips
SS Truss Screw,
8 pcs |
| 15. 
122450
Lever Clip
4 pcs | | | | | | |

If your flares already have the edge trim installed, skip to Front Flare Installation Step 1.

STEP 2 - EDGE TRIM INSTALLATION

A. Peel two to three inches of red vinyl backing away from Edge Trim (GP1-0025) tape. Applying the adhesive side of the edge trim to the inner side of the flare, affix the edge trim to the top edge of the flare (the portion that comes in contact with the vehicle).

B. Press edge trim into place along the top edge of the flare in one-foot increments, pulling red vinyl backing free as you continue to work your way around the top edge of the flare.



Pocket Hardware Installation Procedures:



Put a Washer (WA1-0012) on each Bolt (SW1-0067).



Put each Bolt/Washer combination through a pocket hole in the flare, Bolt head and Washer on the outside.

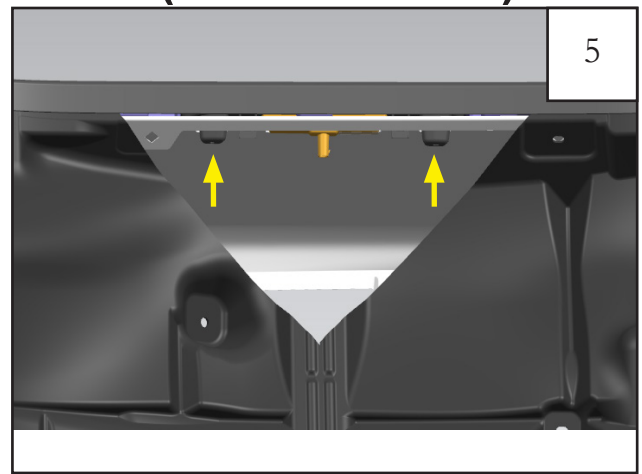


Place a Nut (NU1-0019) over the end of each Bolt and tighten, using a 1/2" wrench for the Nut and the supplied Torx Bit (SW1-0052) for the Bolt. Repeat for remaining pockets.

Front Flare Installation Procedures (Driver's Side):



Remove (10) factory installed T-15 Torx screws. Retain screws as these will be reused to install the new flare.



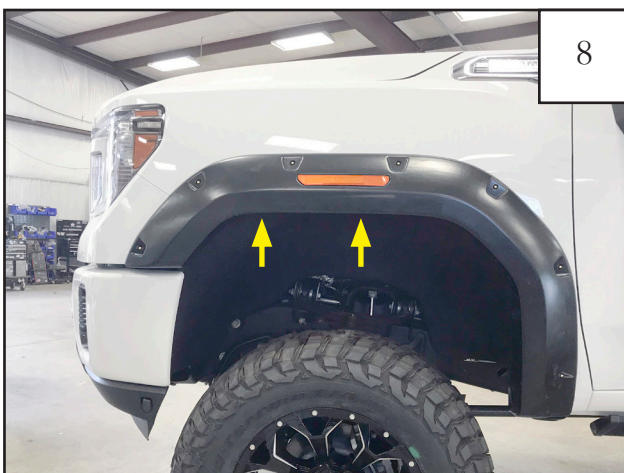
Pull back inner fender liner to access (2) factory installed T-15 torx screws that hold the light in place. Remove and retain torx screws. Disconnect light and set aside for reuse. Remove factory fender flare from vehicle.



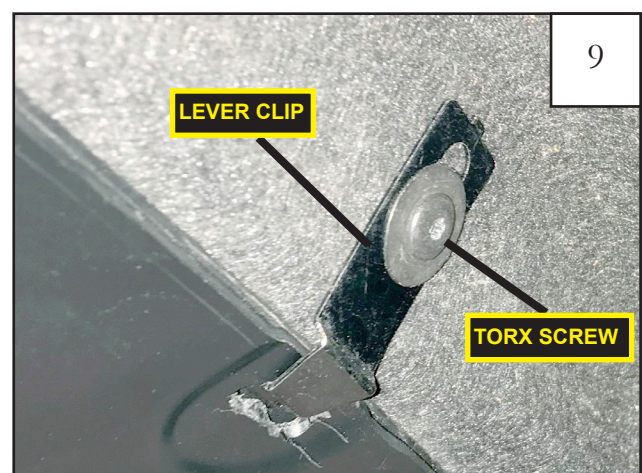
Install light in new flare using (2) torx screws removed in **Step 5**.



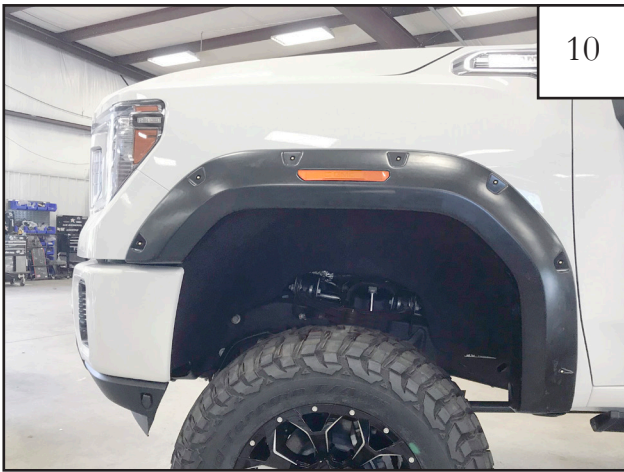
Connect light, and install fender flare reusing (4) T-15 torx screws removed in **Step 4**.



Install (2) Lever Clips (122450) using (2) T-15 torx screws as shown. See Frame 9 for detail.

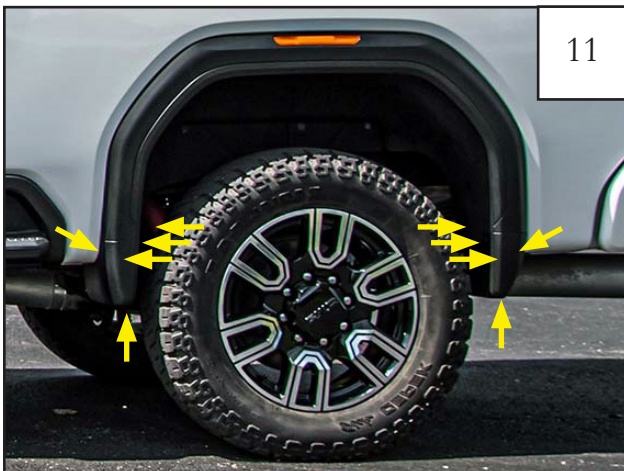


Lever clip (122450) and T-15 torx screw properly installed.

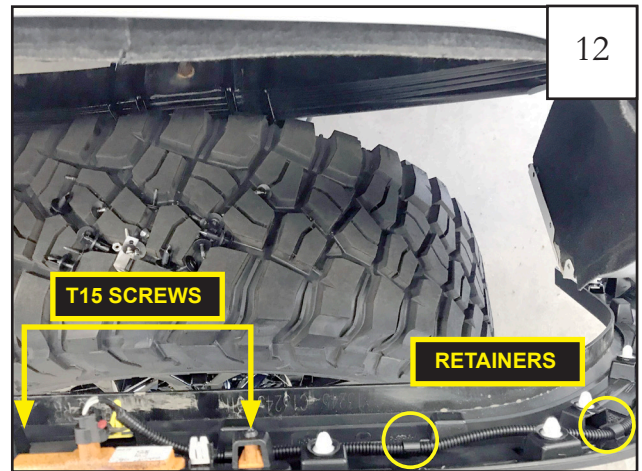


Completed front flare installation.

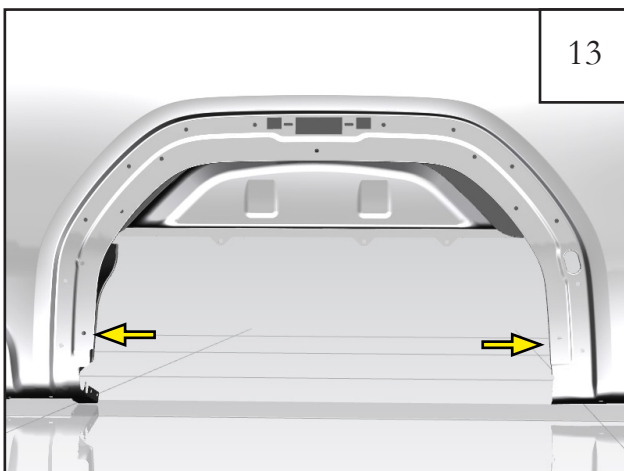
Rear Flare Installation Procedures (Driver's Side)



Remove (10) T-15 torx screws and remove factory mud guards. Firmly pull on factory wheel arch molding to remove.



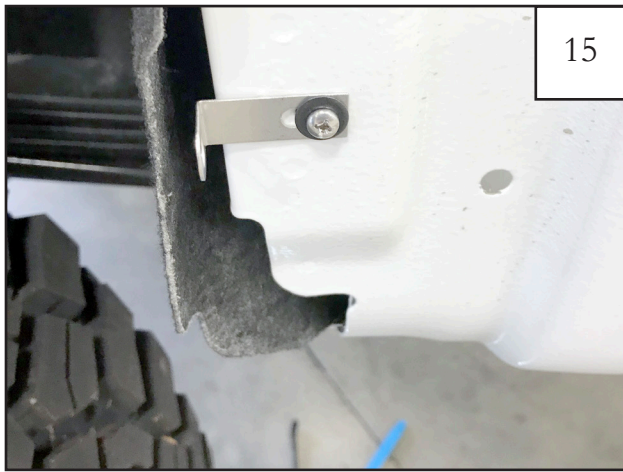
Remove and retain (2) T-15 torx screws and disconnect light. Unhook retainers holding wire loom.



Use (4) flat washers (WA1-0014), (2) Phillips screws (SW1-0054) and (2) Nuts (NU1-0004) to install (2) mounting brackets (MB1-003) in two locations as shown in Frame 14 and 15.

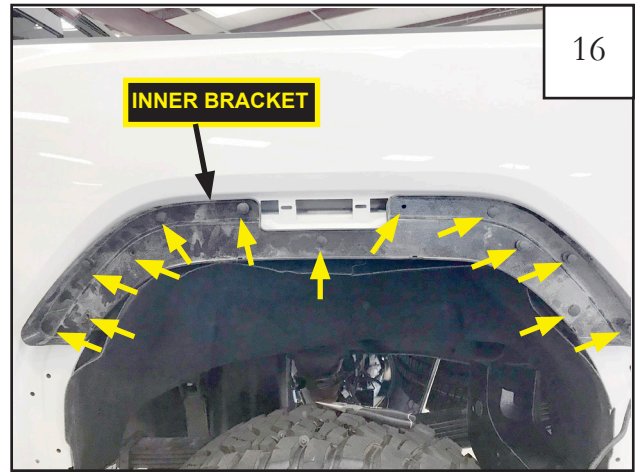


It may be necessary to slightly trim wheel liner so that it does not interfere with mounting hole.



15

It may be necessary to slightly trim wheel liner so that it does not interfere with mounting hole.



16

Use (13) nylon retainers (RV1-P006) to install inner bracket.



17

Use (4) U-clips (CL1-0022) installed at (4) hole locations on inner bracket.



18

Install light in new flare using (2) torx screws removed in **Step 12**.



19

Connect electrical wire for light and run inside flare.



20

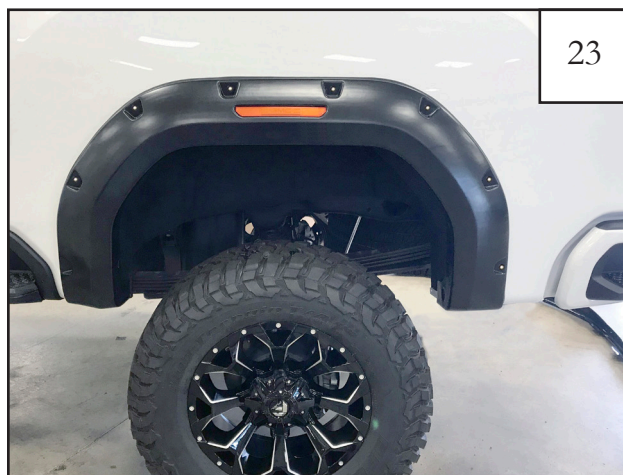
Use (4) Truss Screws (SW1-0058) to install flare on to U-Clips (CL1-0022) on inner bracket



Reinstall (3) T-15 torx screws.



Install (2) panel retainers (RV1-P008).



Completed rear flare installation.

Edge Trim Tool Procedures:



Using supplied Edge Trim Tool (ET1-0002), seat edge trim against vehicle by hooking curved end under edge trim at one end of flare. Next, slide around outer edge of flare to the other end.



Using flat end of supplied Edge Trim Tool (ET1-0002), seat edge trim against flare by inserting straight end between edge trim and flare at one end. Next, slide around entire edge to the other end.